

# エレガンストーン Eleganstone

Deluxe Natural Stone Like Decorative Coating



[www.mjbsentosa.com](http://www.mjbsentosa.com)



**DEDE SETIAWAN**

0812-3578-0669

0818-0326-4111

**CHRISTINA HALIM**

0812-1625-388

# Deluxe Natural Stone Like Coating **Eleganstone**

●一段目地仕上工法 / 目地色: クロ / 発泡目地使用  
(Single Deck Finish / Groove : Black / JOINT STICKER)

(Single Deck Finish / Double Coloured Finish / 30% Gloss)



二色吹き 3分艶 MS-201(White)  
MS-204(Grey) MS-201/204

(Double Coloured Finish / 30% Gloss)

●一段目地仕上工法 / 目地色: クロ / 埋め目地使用  
(Single Deck Finish / Groove : Black / SK JOINT)

(Single Deck Finish / Double Coloured Finish / 30% Gloss)



二色吹き 3分艶 MS-208(Yellow)  
MS-202(Grey) MS-208/202

(Double Coloured Finish / 30% Gloss)



二色吹き 3分艶 MS-201(White)  
MS-202(Grey) MS-201/202

(Double Coloured Finish / Gloss)



二色吹き 3分艶 MS-209(Pink)  
MS-202(Grey) MS-209/202

(Double Coloured Finish / Gloss)



二色吹き 艶有り MS-205(Grey)  
MS-201(White) MS-205/201

(Double Coloured Finish / Gloss)



二色吹き 艶有り MS-210(Red)  
MS-201(Grey) MS-210/203

(Double Coloured Finish / Gloss)



二色吹き 艶有り MS-206(Black)  
MS-201(Grey) MS-206/207



二色吹き 艶有り MS-211(Red)  
MS-203(Grey) MS-211/203

★The pattern of Double Coloured Finish may vary depending on the application methods. Confirm the pattern by sample board or on site mock-up prior to the application.

[www.mjbsentosa.com](http://www.mjbsentosa.com)

●目地色 (CT下塗) Standard Colours For Joint Lines (CT-Under) ※Grey is also available.



クロ  
Black



ライトグレー  
Light Grey



シロ  
White

●目地色 (埋め目地) SK JOINT



アーバングレー  
Urban Grey

※Black colour for SK JOINT, pls. refer to the sample chip on the previous page.

(Single Coloured Finish:30% Gloss)



↑ 単色吹き 3分艶 MS-331

(Single Coloured Finish:30% Gloss)



↑ 単色吹き 3分艶 MS-301

(Single Coloured Finish:30% Gloss)



↑ 単色吹き 3分艶 MS-332

(Single Coloured Finish:30% Gloss)



↑ 単色吹き 3分艶 MS-322

(Single Coloured Finish:30% Gloss)



↑ 単色吹き 3分艶 MS-335

(Single Coloured Finish:30% Gloss)



↑ 単色吹き 3分艶 MS-337

[www.mjbsentosa.com](http://www.mjbsentosa.com)

(Single Coloured Finish:Gloss)



↑ 単色吹き 艶有り MS-333

(Single Coloured Finish:Gloss)



↑ 単色吹き 艶有り MS-336

(Single Coloured Finish:Gloss)



↑ 単色吹き 艶有り MS-323

(Single Coloured Finish:Gloss)



↑ 単色吹き 艶有り MS-325

(Single Coloured Finish:Gloss)



↑ 単色吹き 艶有り MS-334

(Single Coloured Finish:Gloss)



↑ 単色吹き 艶有り MS-338

★As ELEGANSTONE is containing natural stone, the above samples sprayed on paper may be slightly different from actual pattern and colour.

## Easy application to any shape of surface



ELEGANSTONE can be applied easily on the corner and rounded surface where it is difficult to fix genuine stones.

## Groove Designs

Pattern papers / stickers are used to create various groove designs for a more sophisticated and luxurious finish.

[Example]



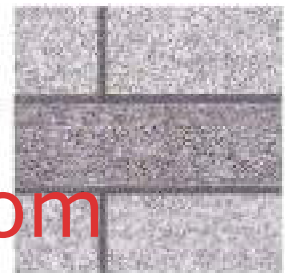
Single-Deck Groove



Double-Deck Groove

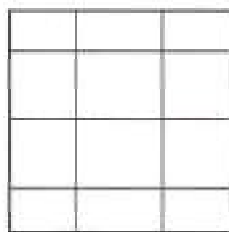


Kataedokiri Groove

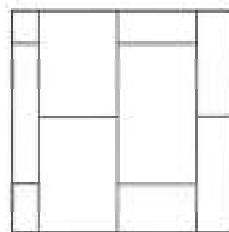


Border Groove

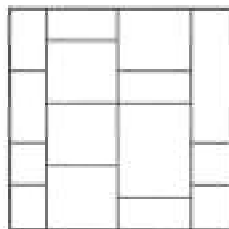
[www.mjbsentosa.com](http://www.mjbsentosa.com)



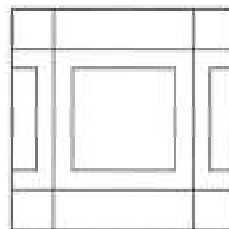
1. Lattice Pattern



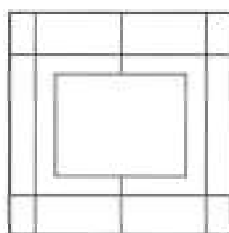
2. Amida Pattern



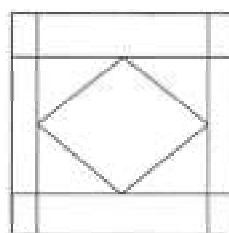
3. Modified Amida Pattern



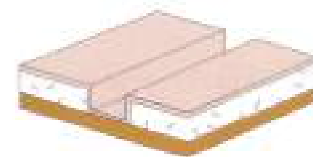
4. Modified Lattice Pattern-A



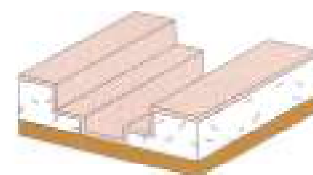
5. Modified Lattice Pattern-B



6. Modified Lattice Pattern-C



Single-Deck Groove



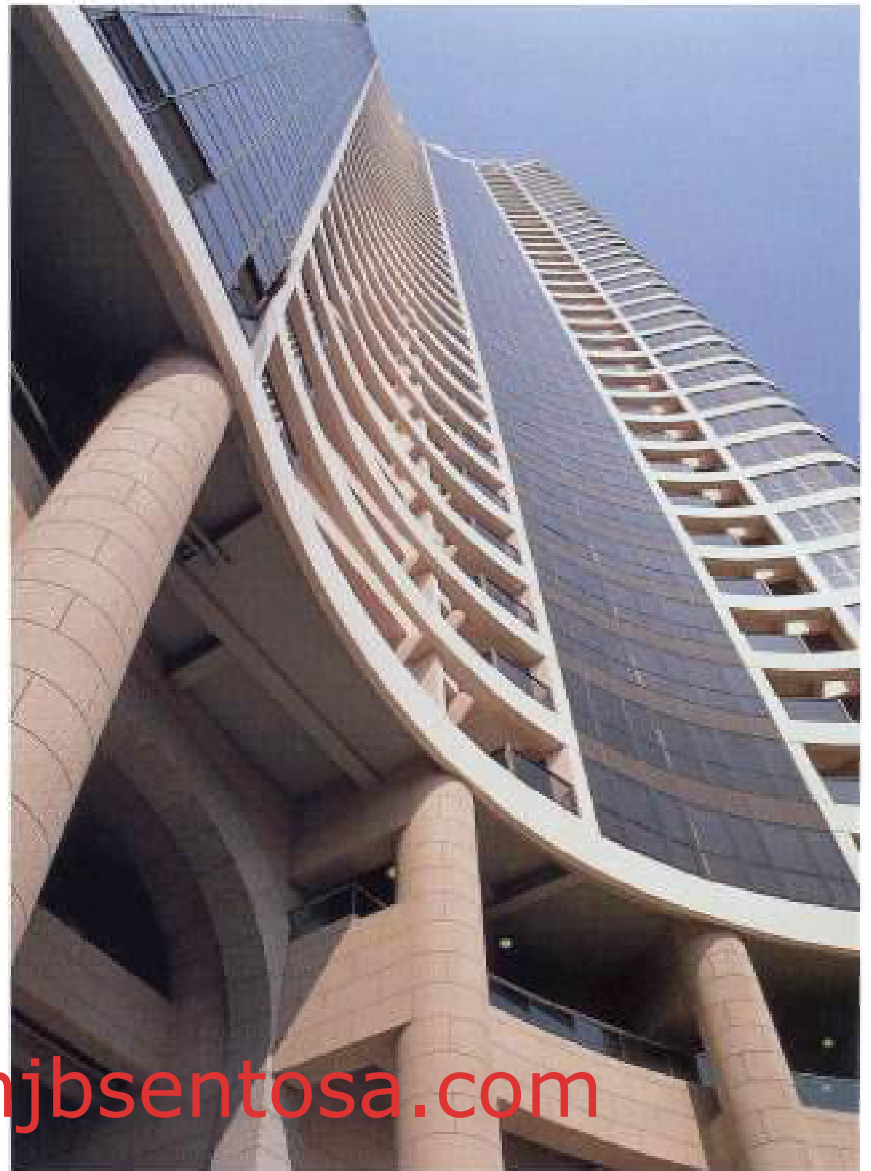
Double-Deck Groove



Gateway at Sentosa(Singapore)



Twin Tower(Sharjah, UAE)



Pacific View Building(Hong Kong)

Deluxe Natural Stone Like Decorative Coating

## ELEGANSTONE

Natural stone has warmth of nature providing unchangeable calmness and peace.

ELEGANSTONE, natural stone like decorative coating, provides luxurious finish with coloured ceramic aggregate.

Nowadays the market demand for buildings changes into more unique and elegant exterior. The appearance is very important as it decides the first impression of building.

ELEGANSTONE may help you to create free and imaginative design of your own. Create your own new and fresh space with ELEGANSTONE.



Berjaya Times Square(Malaysia)

# SKK Global Network

We are expanding our business on the world stage.



## HEADQUARTER IN JAPAN

### SK KAKEN CO.,LTD.

5-25,3-Chome,Nakahozumi,Ibaraki-City,  
Osaka,567-0034,Japan  
Tel: (81-72)621-7727 Fax: (81-72)621-7728  
Web: <http://www.sk-kaken.co.jp>



## SINGAPORE

### SKK (S) PTE.LTD.

14 Pandan Road,Singapore 609262  
Tel: (65)6274-0020 Fax: (65)6278-0060  
Web: <http://www.sk.com.sg>

### SKK (S) PTE.LTD. FACTORY

No.7 Kian Teck Road,Singapore 628766

## HONG KONG

### SKK (HK) CO.,LTD

Suites 1001-07, 10/F.,Dah Sing Financial Center,  
108 Gloucester Rd,Wanchai,Hong Kong  
Tel: (852)2529-3968 Fax: (852)2527-0299  
Web: <http://www.sk.hk.com.hk>

## MALAYSIA

### SK KAKEN (M) SDN.BHD.

Suite 13.01,Level 13,Centrepont South,  
The Boulevard,Mid Valley City,  
Lingkaran Syed Putra, 59200 Kuala Lumpur,Malaysia  
Tel: (60)3-2282-9800 Fax: (60)3-2282-9810  
Web: <http://www.sk.com.my>

### SKK CHEMICAL (M) SDN.BHD.

No7,Jalan 25/123 Taman Perindustrian Axis,  
40400 Shah Alam,Selangor Darul Ehsan,Malaysia

## THAILAND

### SK KAKEN (THAILAND) CO.,LTD.

161/1 SG Tower 5th Floor,Soi Mahadlek Luang 3,  
Rachadamri Rd,Lumpini,Pathumwan,  
Bangkok 10330,Thailand  
Tel: (66)2-651-8722 Fax: (66)2-651-8721

## KOREA

### SK KAKEN (KOREA) CO.,LTD.

1414, Samheung Officetel,705-9,Yeoksam-dong,  
Gangnam-gu,Seoul,Korea  
Tel: (82)2-562-1592 Fax: (82)2-562-1594  
Web: <http://www.sk-kaken.com>

## CHINA

### SHIKOKU KAKEN (SHANGHAI) CO.,LTD.

Units3-7,25F, Far East International Plaza A,  
No.319 Xianxia Road,Changning District,Shanghai,China  
Tel: (86)21-6209-9169 Fax: (86)21-6209-9189  
Web: <http://www.sk.com.cn>

### SHANGHAI FACTORY

No.357 Chungong Road,Minhang District,Shanghai,China

## INDIA

### SKK INDIA LIAISON OFFICE

95,V main,18 Cross,Domlur 2nd Stage,Bangalore  
560 080,India  
Tel: (91)80-4148-2831 Fax: (91)80-4148-2836

## VIET NAM

### SKK VIETNAM REPRESENTATIVE OFFICE

Y Ban Building,Unit#A1,1th Floor,  
69 Thach Thi Thanh St.,Dist. 1,HCM City, Viet Nam  
Tel: (84)8-220-0983 Fax: (84)8-220-0987

[www.mjbsentosa.com](http://www.mjbsentosa.com)